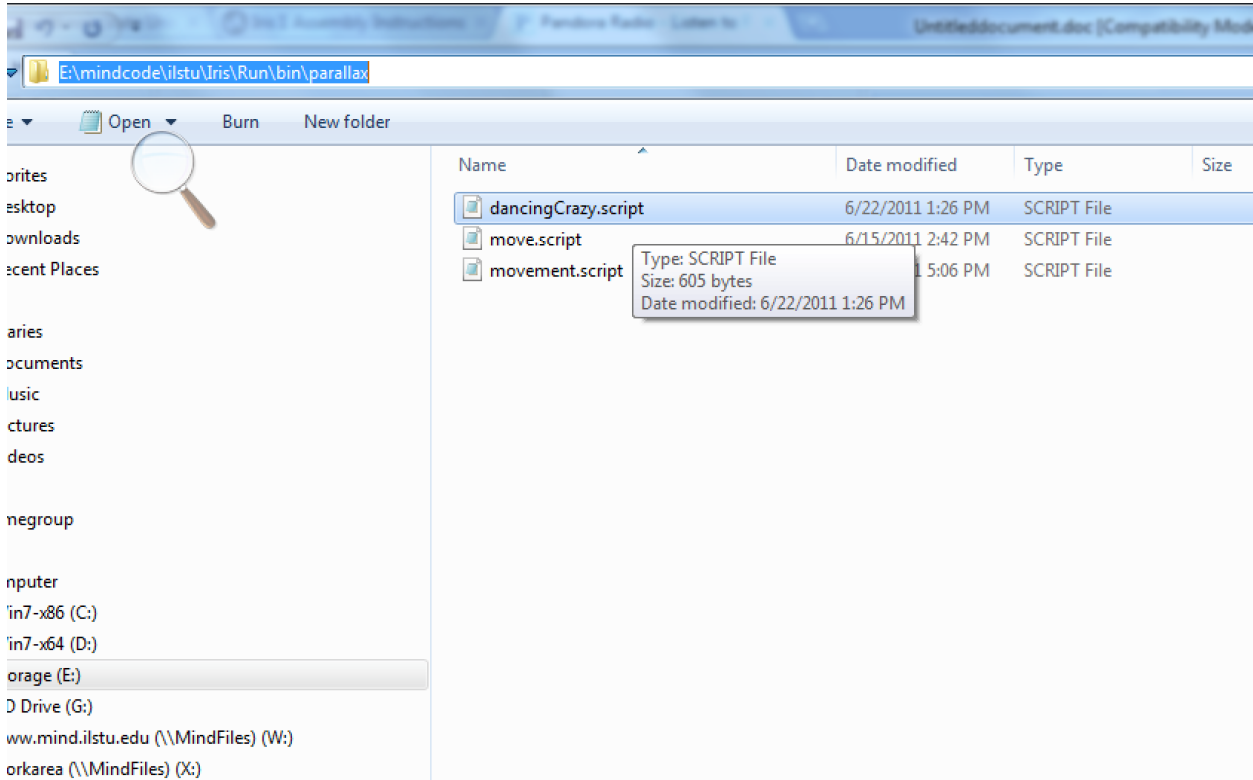


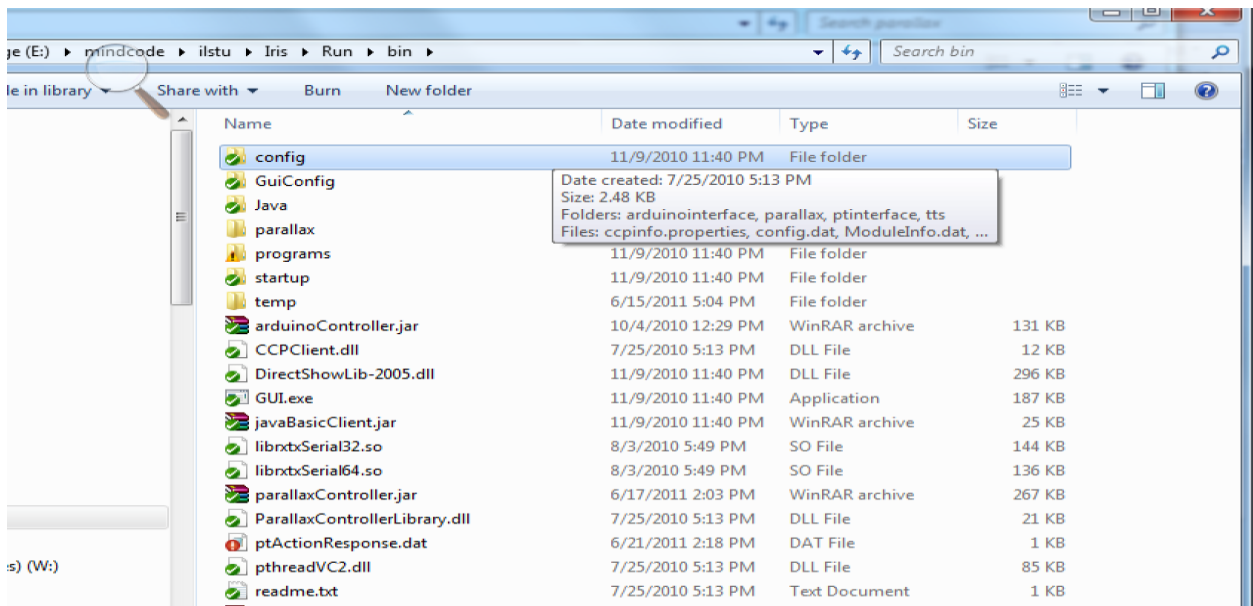
## Adding a Script for Use with Protothinker

1. Copy your script from `\run\bin\parallax\` to `\run\bin\config\parallax\scripts\`

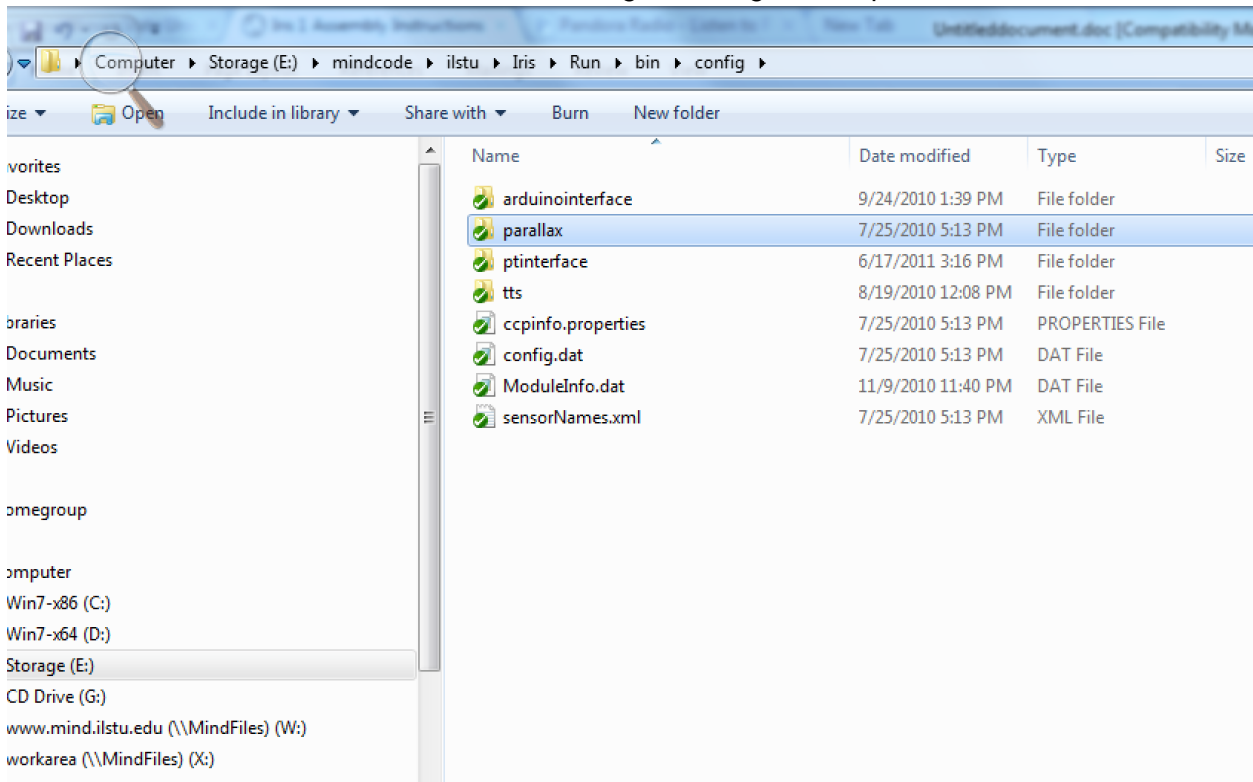
- For example, I have a .script file called dancingCrazy, and I need to move it to the `\run\bin\config\parallax\scripts\` location.
- So, I copy the file I want from the `\run\bin\parallax\` location



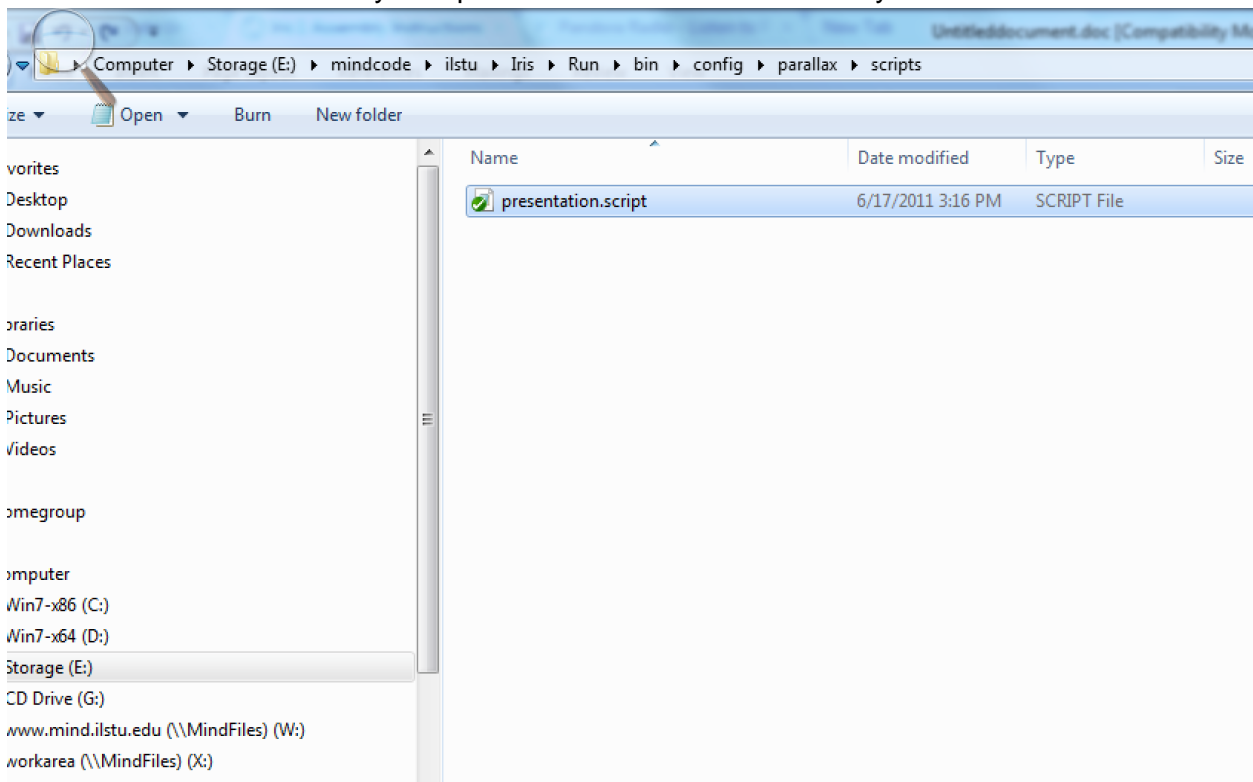
- Now, I have to go to my config file. So, I go to the directory that has all the IRIS files.



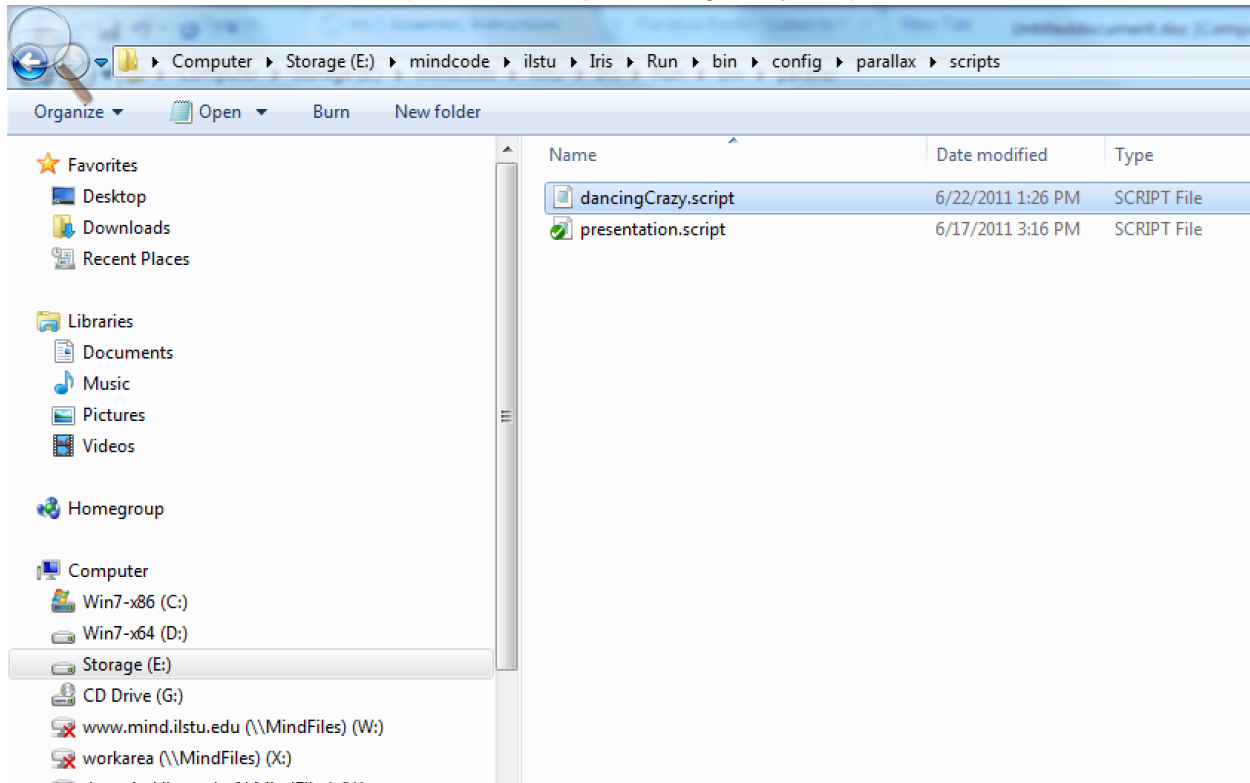
- Next, I enter the config file and go to the parallax folder.



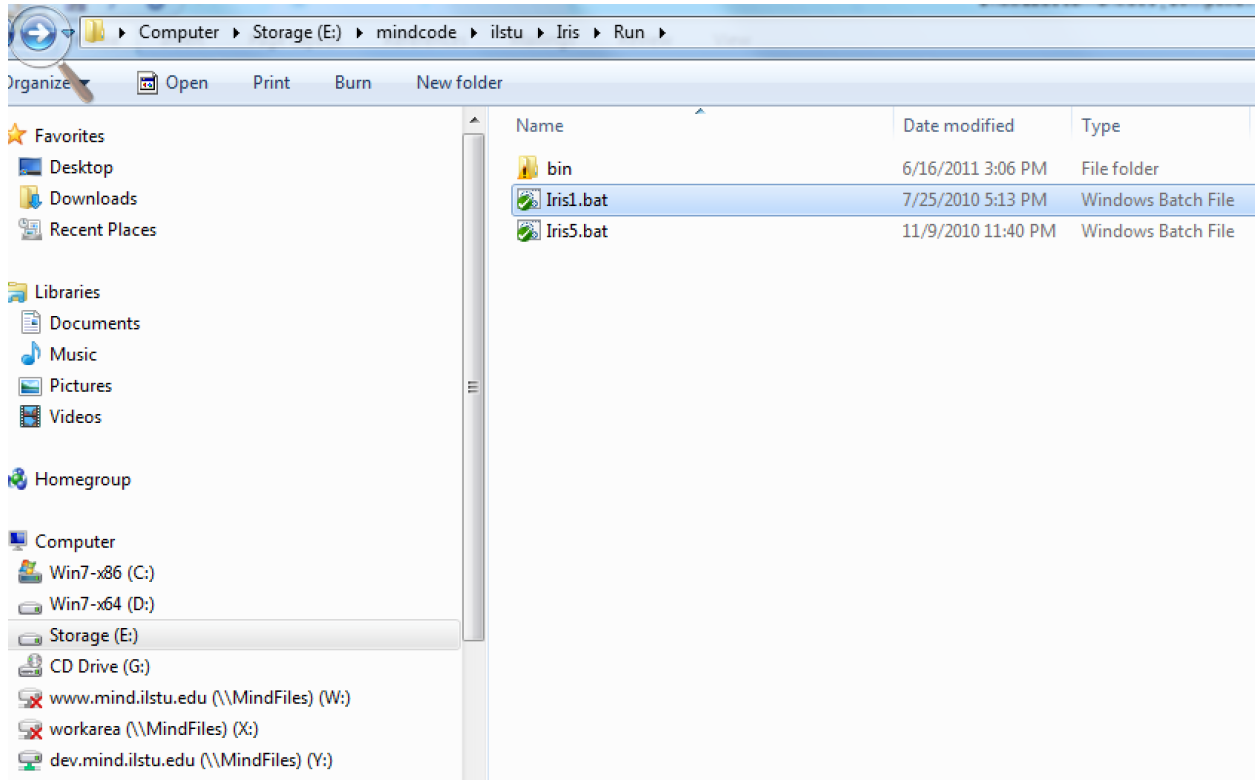
- After clicking on the parallax folder, there will be another folder that says scripts. Click on that and it will take you here:



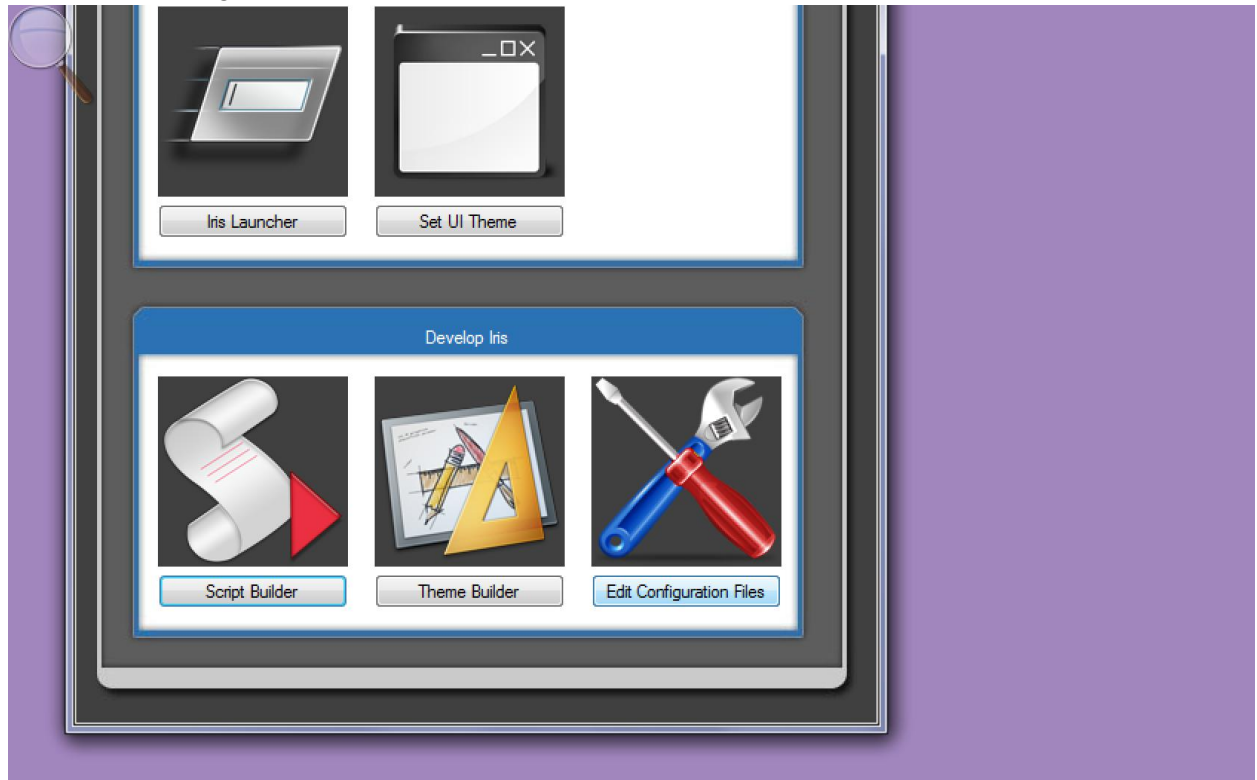
- Copy and paste the script you created into this folder. In my example, I will paste the script dancingCrazy.script into this folder.



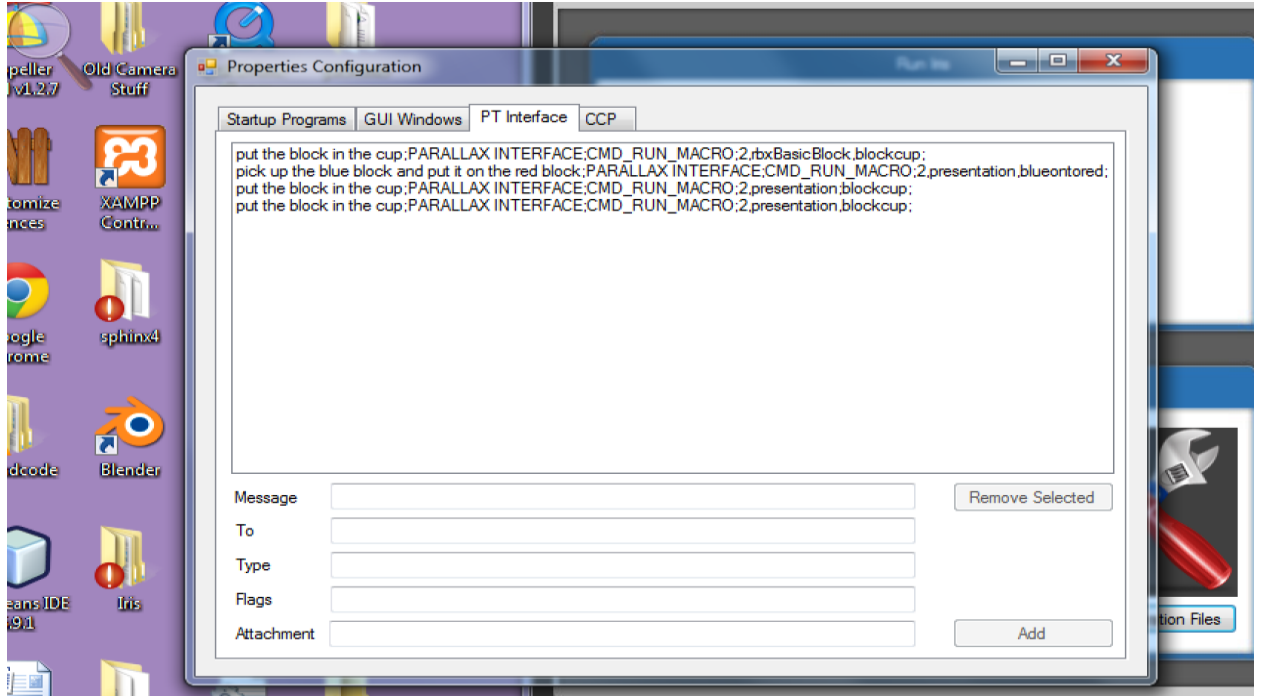
2. Go back and open the [Iris1.bat](#) in the run folder.



3. Click “Edit Configuration Files”



4. Select the "PT Interface" tab.



5. Fill in the spaces with the appropriate data:

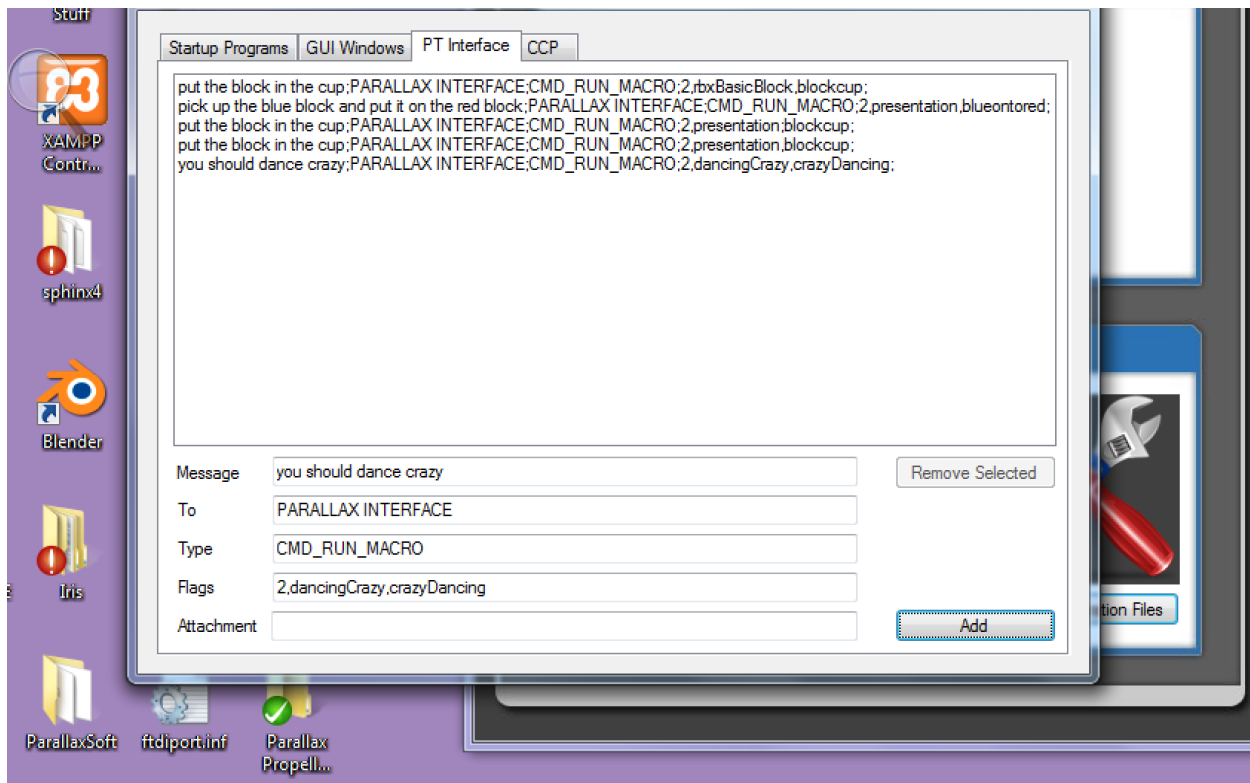
Message - A sentence to initiate the command - ex. "you should dance crazy"

To - PARALLAX INTERFACE  
(note all caps)

Type - CMD\_RUN\_MACRO

Flags - 2,scriptFileNameHere,macroNameHere  
(replace the second and third field with your data)  
Ex. 2, dancingCrazy, crazyDancing

Attachment - (Leave empty)



6. Click "Add"
7. Close the Properties Configuration dialog box.
8. Open the Iris Launcher from the Run Iris menu.
9. In the Iris program select "File > Start Iris"
10. After all of the modules have loaded select ProtoThinker and click "Show Main Screen"
11. Click "Abilities" in the top menu and check mark "Robotic Embodiment" in the lower left corner then click "Ok."
12. Select "Options > Speech Input/Output Options" and check mark the last two options which are "Output responses to REPLY.TMP file" and "Run REPLY.EXE when responses are voiced."
13. Now you should be able to type your sentence into ProtoThinker and get a Parallax response!